



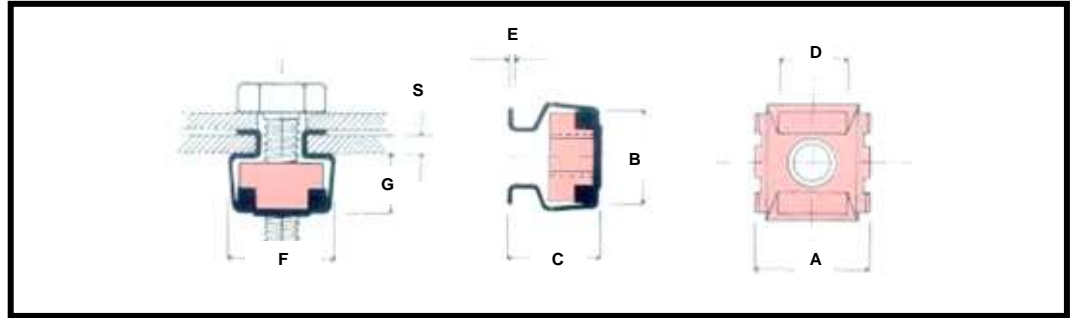
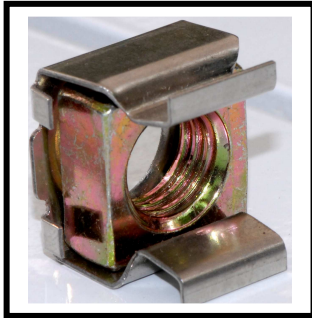
FICHE TECHNIQUE

sous réserve de toutes modifications

46 ACIER/INOX
3/09

ECROU CAGE TYPE SERCAGE *Ecrou ACIER/Cage INOX*

61 avenue de l'Europe - 78140 Vélizy-Villacoublay - Tel : 00 33 (0)1 78 74 32 00 - Fax : 00 33 (0)1 78 74 32 01



Réf.	M	Epaisseur Support S	Dimension de l'écrou	A (+0.6 /-0)	B (+/-0.5)	C (+/-0.3)	D (+/-0.2)	E (+/-0.1)	F (+/-0.3)	G (+/-0.3)	Dimension du poinçonnage (+/-0.2)	
46/M03AX53	M3	0.3-0.9	8x8x2.5	9.3	8.8	5.2	4.8	0.3	9.7	3.6	5.3	
46/M03BX53		1-1.6				5.9						
46/M03CX53		1.7-2.3				6.6						
46/M03DX53		2.4-3.1				7.4						
46/M04AX53	M4	0.3-0.9	8x8x2.5	9.3	8.8	5.2	4.8	0.3	9.7	3.6		
46/M04BX53		1-1.6				5.9						
46/M04CX53		1.7-2.3				6.6						
46/M04DX53		2.4-3.1				7.4						
46/M04XA67	M4	0.7-1.6	8x8x3.5	10	9	7.2	5.8	0.45	10.3	4.8	6.7	
46/M04BX67		1.8-2.6				8.2						
46/M05AX67	M5	0.7-1.6	8x8x3.5	10	9	7.2	5.8	0.45	10.3	4.8		
46/M05BX67		1.7-2.6				8.2						
46/M04OX83	M4	0.3-1.1	10x10x4	12	11.4	8	7.2	0.45	12.2	6	8.3	
46/M04AX83		1.2-1.6				8.5						
46/M04BX83		1.7-2.5				9.5						
46/M04CX83		2.6-3.5				10.5						
46/M04DX83		3.6-4.5				11.5						
46/M05OX83	M5	0.3-1.1	10x10x4.5	12	11.4	8	7.2	0.45	12.2	6		
46/M05AX83		1.2-1.6				8.5						
46/M05BX83		1.7-2.5				9.5						
46/M05CX83		2.6-3.5				10.5						
46/M05DX83		3.6-4.5				11.5						
46/M06OX83	M6	0.3-1.1	10x10x4.5	12	11.4	8	7.2	0.45	12.2	6		
46/M06AX83		1.2-1.6				8.5						
46/M06BX83		1.7-2.5				9.5						
46/M06CX83		2.6-3.5				10.5						
46/M06DX83		3.6-4.5				11.5						
46/M04AX95	M4	0.7-1.6	11x11x4	13.8	13	8.5	8.2	0.45	14.6	6	9.5	
46/M04BX95		1.7-2.6				9.5						
46/M04CX95		2.7-3.5				10.5						
46/M05AX95	M5	0.7-1.6	11x11x4.5	13.8	13	8.5	8.2	0.45	14.6	6		
46/M05BX95		1.7-2.6				9.5						
46/M05CX95		2.7-3.5				10.5						
46/M06AX95	M6	0.7-1.6	11x11x4.5	13.8	13	8.5	8.2	0.45	14.6	6		
46/M06BX95		1.7-2.6				9.5						
46/M06CX95		2.7-3.5				10.5						
46/M06AX123	M6	1-1.7	14x14x5	16	15.5	10.4	8/11	0.5	16.6	7.8		12.3
46/M06BX123		1.8-3.2				12						
46/M06CX123		3.3-4.7				13.5						
46/M08AX123	M8	1-1.7	14x14x5.5	16	15.5	10.4	8/11	0.5	16.6	7.8		
46/M08BX123		1.8-3.2				12						
46/M08CX123		3.3-4.7				13.5						
46/M10AX123	M10	1-1.7	14x14x5.5	16	15.5	10.4	8/11	0.5	16.6	7.8		
46/M10BX123		1.8-3.2				12						
46/M10CX123		3.3-4.7				13.5						
46/M10AX140	M10	1-1.7	17x17x7.5	20	19.4	13.5	12.6	0.6	20.5	10.4	14.0	
46/M10BX140		1.8-3.2				15						
46/M10CX140		3.3-4.7				16.5						
46/M10DX140		4.8-6.2				18						
46/M12AX140	M12	1-1.7	17x17x7.5	20	19.4	13.5	12.6	0.6	20.5	10.4		
46/M12BX140		1.8-3.2				15						
46/M12CX140		3.3-4.7				16.5						
46/M12DX140		4.8-6.2				18						